

The PRESSMASTER

Fast-breaking
simplicity in
bending parts.



The PRESSMASTER
Press brakes
Sheet Metal

Performance,
double-quick and
truehearted

The PRESSMASTER

Performance, Speed and Accuracy

- 2D/3D Graphic Controls with automatic bending sequence calculation
- Automatic generation of the bending program and Auto Tooling
- First-rate consistent angle accuracy by means of table crowning
- Increased daylight opening, stroke and gap
- Fast X-R-Z1/Z2 Backgauge System
- Compatible with European Standard (ES) and New Standard (NS) tooling systems
- Capacity from 750 up to 2500kN, Bending Length from 2000 up to 4300mm



Configurations possible for multi-presses (tandem, tridem) and automated bending systems (robot bending)

STANDARD EQUIPMENT

- > FastBEND-2D Premium Graphic Control with 15" Touch Screen
- > Increased daylight opening (up to 620 mm)
- > Fast X-R-Z1/Z2 Backgauge
- > Fast Approach Speed 200 mm/s (models up to 2000kN)
- > Fast Return Speed 170 mm/s (models up to 2000kN)
- > Stroke X-axis = 800mm, speed = 1000mm/s (models up to 4m and 2500kN)
- > Stroke R-axis = 130mm (models up to 4m and 2500kN)
- > Z1-Z2 axis, speed = 1000mm/s (models up to 4m and 2500kN)
- > CNC Adjustable Crowning Table for European Standard tooling
- > 2 Movable sheet supports
- > European Standard toptooling with Quick Manual Clamping arrangement

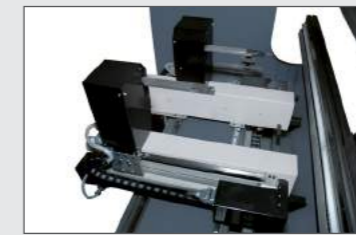
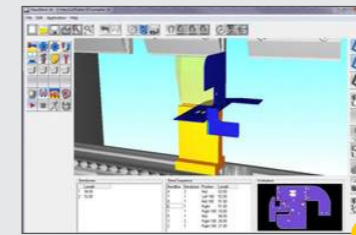
The PRESSMASTER is a Top-Level Synchro Pressbrake with increased daylight opening, stroke & gap featuring excellent bending angle precision. It is a more-axes CNCpressbrake with electronically controlled beam parallelism and depth-stop setting.

Think more precision,
think more speed,
think more bending

The PRESSMASTER

Options

- 1 HacoBend-2D/3D Offline Software
- 2 5 and 6 axes backgauge systems
- 3 Angle Measurement System ALFA/F and AST (= Angle Sensor Tool)
- 4 New Standard tooling (Wila Premium / LED Tool indicator)
- 5 CNC sheet following system
- 6 Optical Guarding systems (Lasersafe LZS-005, Fiessler AKAS III, ...)



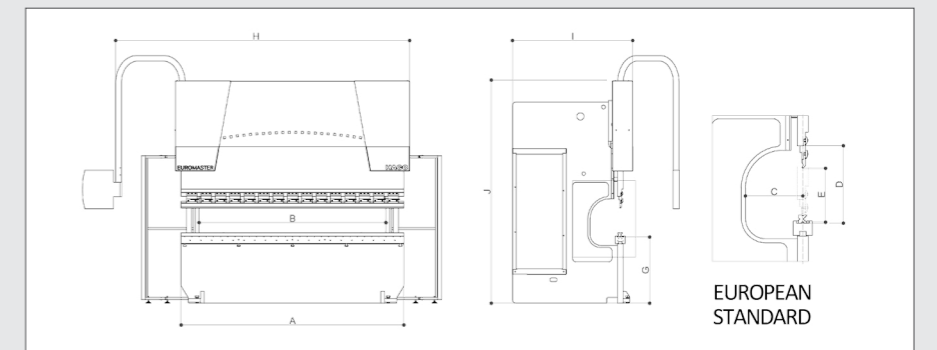
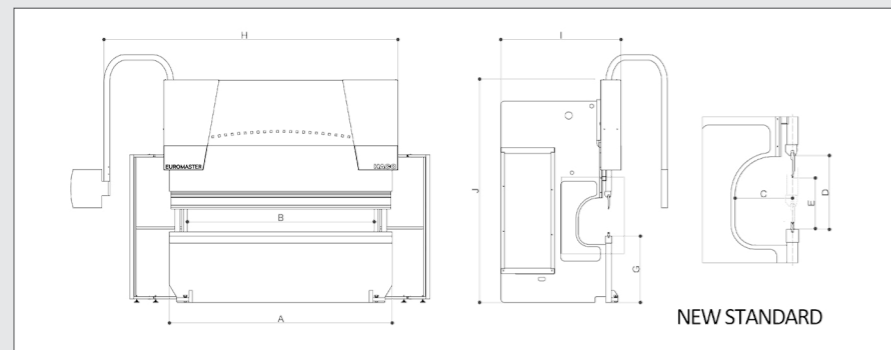


Bend faster,
Bend smarter,
Achieve more

The PRESSMASTER Technical Specifications

Type	Bending Length	Capacity	Distance between housings	Gap	Daylight Opening (European Standard)	Daylight Opening (New Standard)	Stroke	Table Height	Fast Approach Speed	Max. Bending Speed	Fast Return Speed	Motor Power	Length	Width	Height	Weight
PRESSMASTER	A		B	C	D	D	E	G					H	I	J	
20075	2100 mm	750 kN	1600 mm	400 mm	570 mm	540mm	370 mm	840 mm	200 mm/s	10 mm/s	170 mm/s	7,5 kW	2450 mm	1850 mm	3250 mm	5600 kg
25075	2600 mm	750 kN	2100 mm	400 mm	570 mm	540mm	370 mm	840 mm	200 mm/s	10 mm/s	170 mm/s	7,5 kW	2900 mm	1850 mm	3250 mm	6000 kg
30075	3100 mm	750 kN	2600 mm	400 mm	570 mm	540mm	370 mm	840mm	200 mm/s	10 mm/s	170 mm/s	7,5 kW	3500 mm	1850 mm	3250 mm	6400 kg
25100	2600 mm	1000 kN	2100 mm	400 mm	570 mm	540mm	370 mm	875 mm	200 mm/s	10 mm/s	170 mm/s	11 kW	2900 mm	2050 mm	3250 mm	8400 kg
30100	3100 mm	1000 kN	2600 mm	400 mm	570 mm	540mm	370 mm	875 mm	200 mm/s	10 mm/s	170 mm/s	11 kW	3500 mm	2050 mm	3250 mm	9000 kg
36100	3600 mm	1000 kN	3150 mm	400 mm	570 mm	540mm	370 mm	875 mm	200 mm/s	10 mm/s	170 mm/s	11 kW	4100 mm	2050 mm	3250 mm	9900 kg
40100	4100 mm	1000 kN	3150 mm	400 mm	570 mm	540mm	370 mm	915 mm	200 mm/s	10 mm/s	170 mm/s	11 kW	4400 mm	2050 mm	3250 mm	11000 kg
43100	4300 mm	1000 kN	3750 mm	400 mm	570 mm	540mm	370 mm	915 mm	200 mm/s	10 mm/s	170 mm/s	11 kW	4700 mm	2050 mm	3600 mm	12800 kg
25150	2600 mm	1500 kN	2100 mm	400 mm	570 mm	540mm	370 mm	915 mm	200 mm/s	10 mm/s	170 mm/s	15 kW	2900 mm	2050 mm	3250 mm	9300 kg
30150	3100 mm	1500 kN	2600 mm	400 mm	570 mm	540mm	370 mm	915 mm	200 mm/s	10 mm/s	170 mm/s	15 kW	3500 mm	2050 mm	3250 mm	9900 kg
36150	3600 mm	1500 kN	3150 mm	400 mm	570 mm	540mm	370 mm	915 mm	200 mm/s	10 mm/s	170 mm/s	15 kW	4100 mm	2050 mm	3250 mm	11300 kg
40150	4100 mm	1500 kN	3150 mm	400 mm	570 mm	540mm	370 mm	915 mm	200 mm/s	10 mm/s	170 mm/s	15 kW	4400 mm	2050 mm	3250 mm	12600 kg
43150	4300 mm	1500 kN	3750 mm	400 mm	570 mm	540mm	370 mm	1010 mm	200 mm/s	10 mm/s	170 mm/s	15 kW	4700 mm	2050 mm	3600 mm	15600 kg
25200	2600 mm	2000 kN	2100 mm	400 mm	620mm	540mm	370 mm	965 mm	200 mm/s	8 mm/s	170 mm/s	18,7 kW	2820 mm	2300 mm	3500 mm	13600 kg
30200	3100 mm	2000 kN	2600 mm	400 mm	620mm	540mm	370 mm	965 mm	200 mm/s	8 mm/s	170 mm/s	18,7 kW	3320 mm	2300 mm	3500 mm	14100 kg

Type	Bending Length	Capacity	Distance between housings	Gap	Daylight Opening (European Standard)	Daylight Opening (New Standard)	Stroke	Table Height	Fast Approach Speed	Max. Bending Speed	Fast Return Speed	Motor Power	Length	Width	Height	Weight
PRESSMASTER	A		B	C	D	D	E	G					H	I	J	
36200	3600 mm	2000 kN	3150 mm	400 mm	620mm	540mm	370 mm	965 mm	200 mm/s	8 mm/s	170 mm/s	18,7 kW	3880 mm	2300 mm	3550 mm	17600 kg
40200	4100 mm	2000 kN	3150 mm	400 mm	620mm	540mm	370 mm	965 mm	200 mm/s	8 mm/s	170 mm/s	18,7 kW	4320 mm	2300 mm	3550 mm	18600 kg
43200	4300 mm	2000 kN	3750 mm	400 mm	620mm	540mm	370 mm	965 mm	200 mm/s	8 mm/s	170 mm/s	18,7 kW	4520 mm	2300 mm	3650 mm	20800 kg
30250	3100 mm	2500 kN	2600 mm	400 mm	620mm	540mm	370 mm	965 mm	100 mm/s	8 mm/s	90 mm/s	18,7 kW	3320 mm	2350 mm	3550 mm	15600 kg
36250	3600 mm	2500 kN	3150 mm	400 mm	620mm	540mm	370 mm	965 mm	100 mm/s	8 mm/s	90 mm/s	18,7 kW	3880 mm	2350 mm	3550 mm	19400 kg
40250	4100 mm	2500 kN	3150 mm	400 mm	620mm	540mm	370 mm	890 mm	100 mm/s	8 mm/s	90 mm/s	18,7 kW	4320 mm	2350 mm	3550 mm	20500 kg
43250	4300 mm	2500 kN	3750 mm	400 mm	620mm	540mm	370 mm	890 mm	100 mm/s	8 mm/s	90 mm/s	18,7 kW	4250 mm	2350 mm	3750 mm	22600 kg



PRESSMASTER



CNC Punching Machines



CNC Guillotine Shears



CNC Plasma Cutting Machines

HACO NV
Oekensestraat 120
8800 Roeselare
Belgium
T +32 (0) 51 74 64 54
E-Mail: info@haco.com
www.haco.com

The PRESSMASTER
Press brakes
Sheet Metal

WWW.HACO.COM

For Impressive Performances